



2018



XVIII CONGRESSO SOC  
*Società Oftalmologica Calabrese*

19-20 OTTOBRE 2018  
TROPEA (VV) | Hotel Tropis

Presidente del Congresso  
Prof. Giovanni Scordia

Organizzato dal  
Consiglio Direttivo SOC

Organizzatori territoriali:  
Dr. Gregorio Paglianiti  
Dr. Carmelo Traclò

**V CORSO AVANZATO DIAGNOSTICO-CHIRURGICO DI SEMEIOTICA STRUMENTALE & LIVE SURGERY**

Evento congiunto ASMOOI-SOC

**Responsabile Scientifico: Amedeo Lucente - Responsabile Live Surgery: Vincenzo Scordia**

**Ultra-Widefield & Angio-OCT**



[www.amedeolucente.it](http://www.amedeolucente.it)

# Disclosure

## Consulting Free

- Carl Zeiss Meditec
- Alfa Intes
- Mesofarma srl

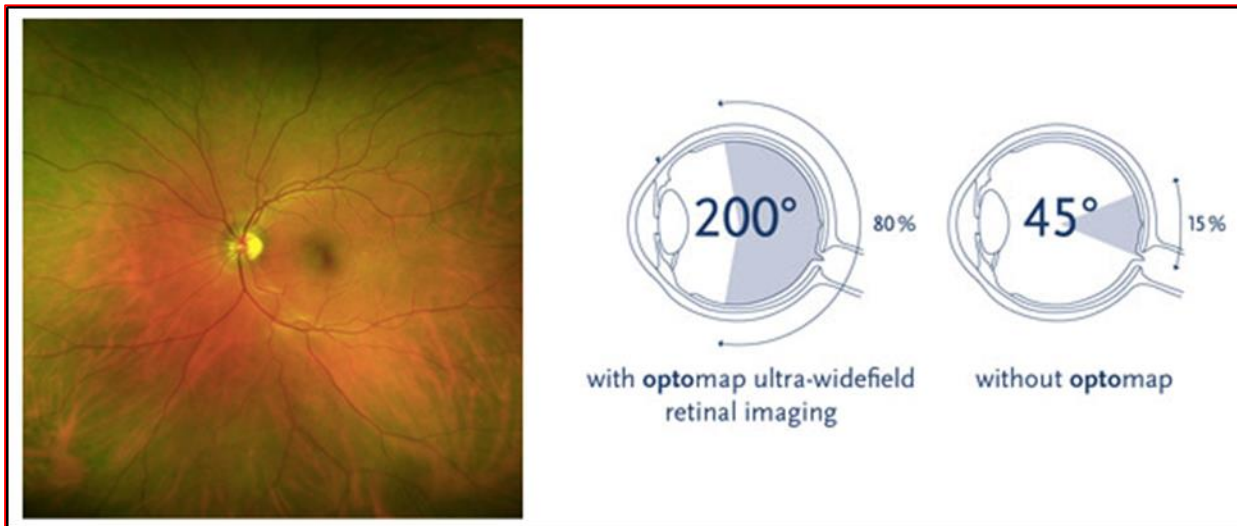
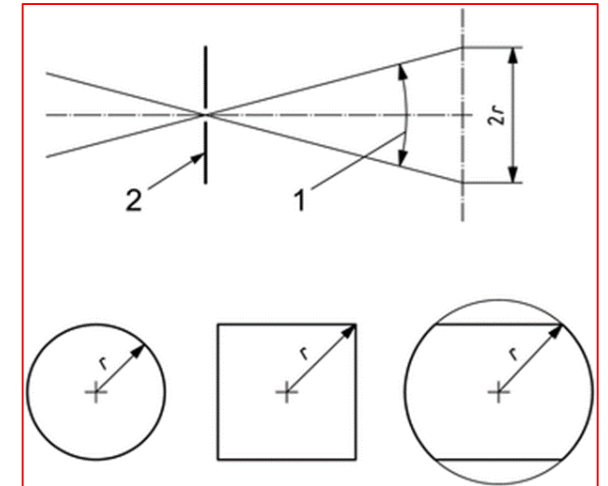
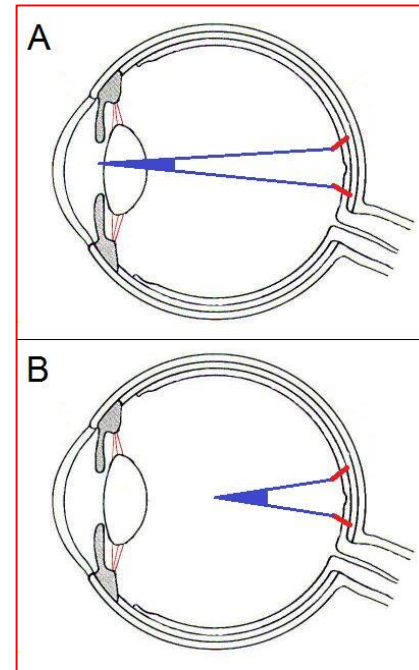
# FoV Field of View

FF Retinal Camera Zeiss  
after Nordenson Year 1930  
**Price \$ 768 f.o.b. N.Y.**  
(free on board, New York)

1 \$ 1930 = 76,5 \$  
768 \$ x 76,5 \$ ~ 58.752 \$



**FoV ≥ 50°** Widefield Imaging  
**FoV ≥ 100°** Ultra-Widefield Imaging

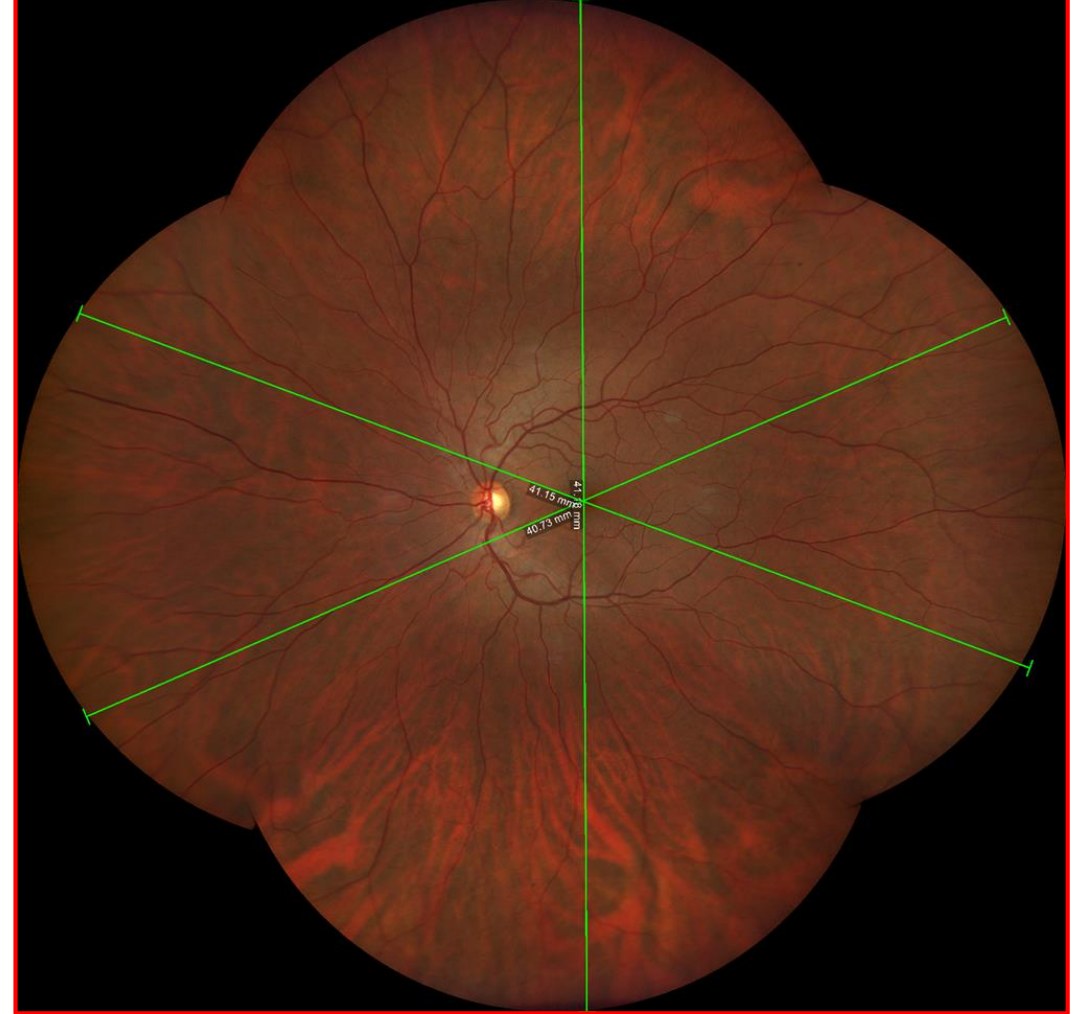


**ISO 10940** (International Organization for Standardization)





**FoV 133° x 133°** (out of ISO) occhio emmetrope  
**one shot.** da estremo ad estremo  
SINT ~ **27 mm**

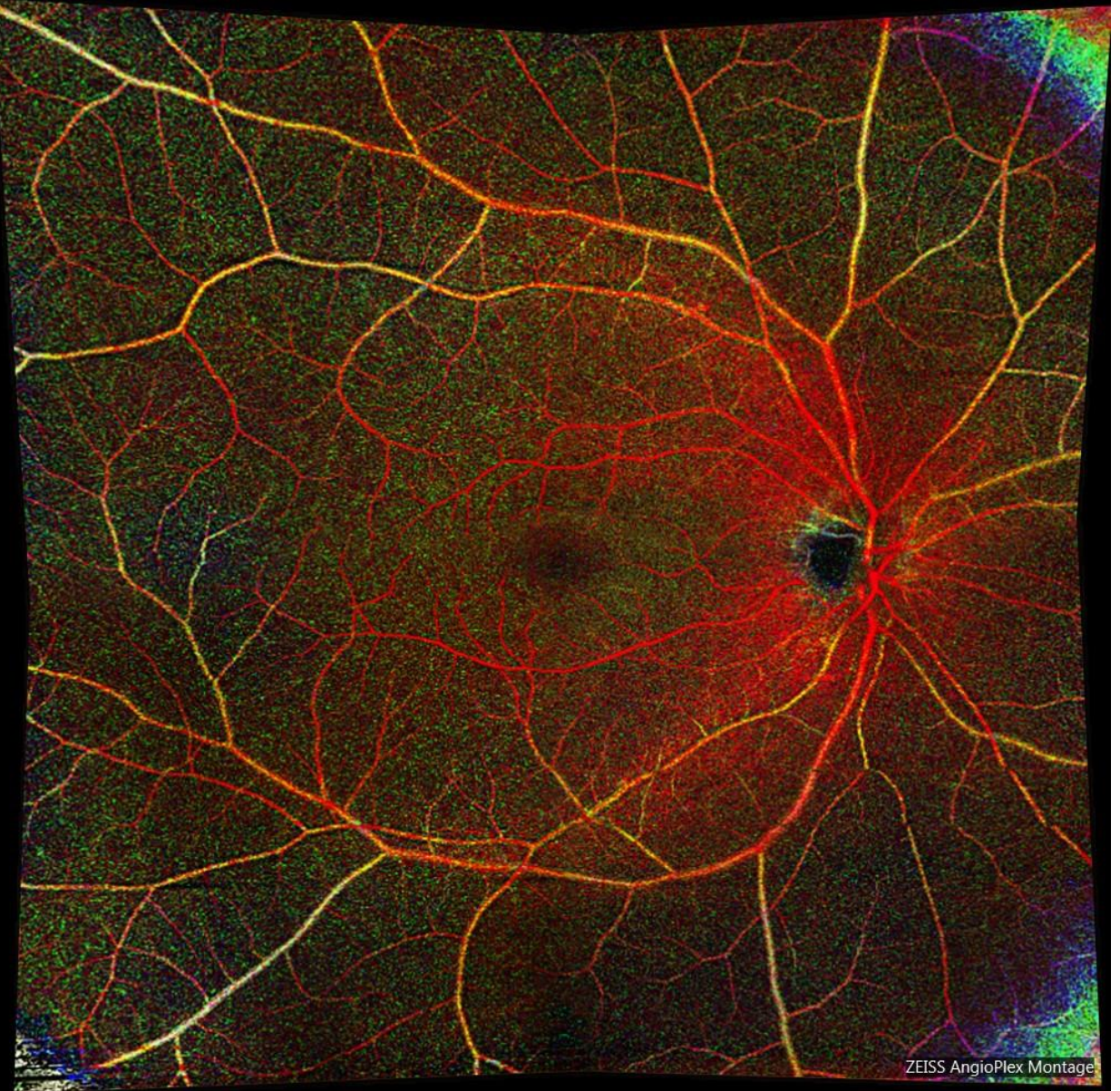
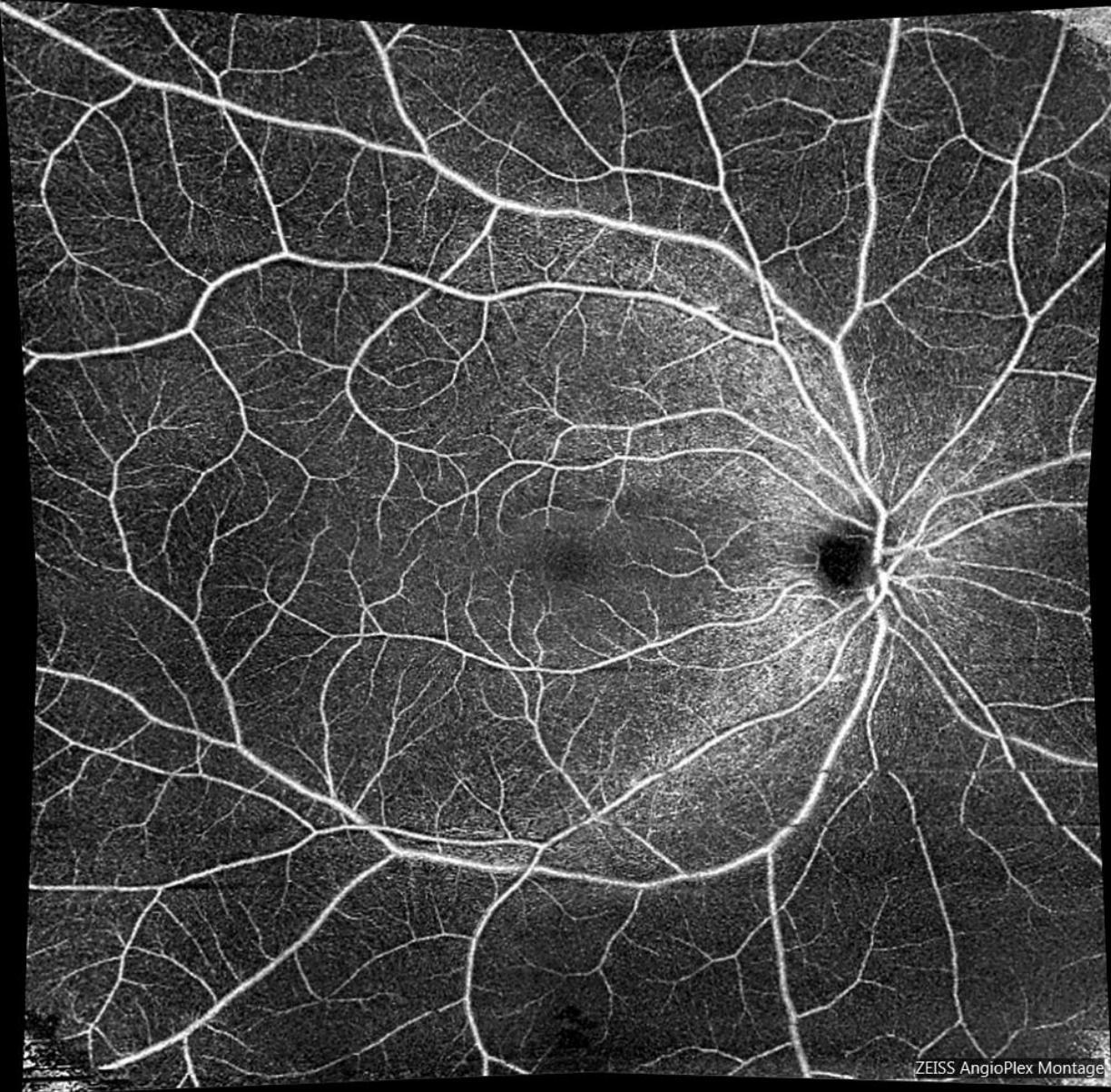


Montaggio automatico **four shots FoV 200° wide by 200° tall**  
(out of ISO) occhio emmetrope. La lunghezza misurabile è  
~ **41 mm** da estremo ad estremo



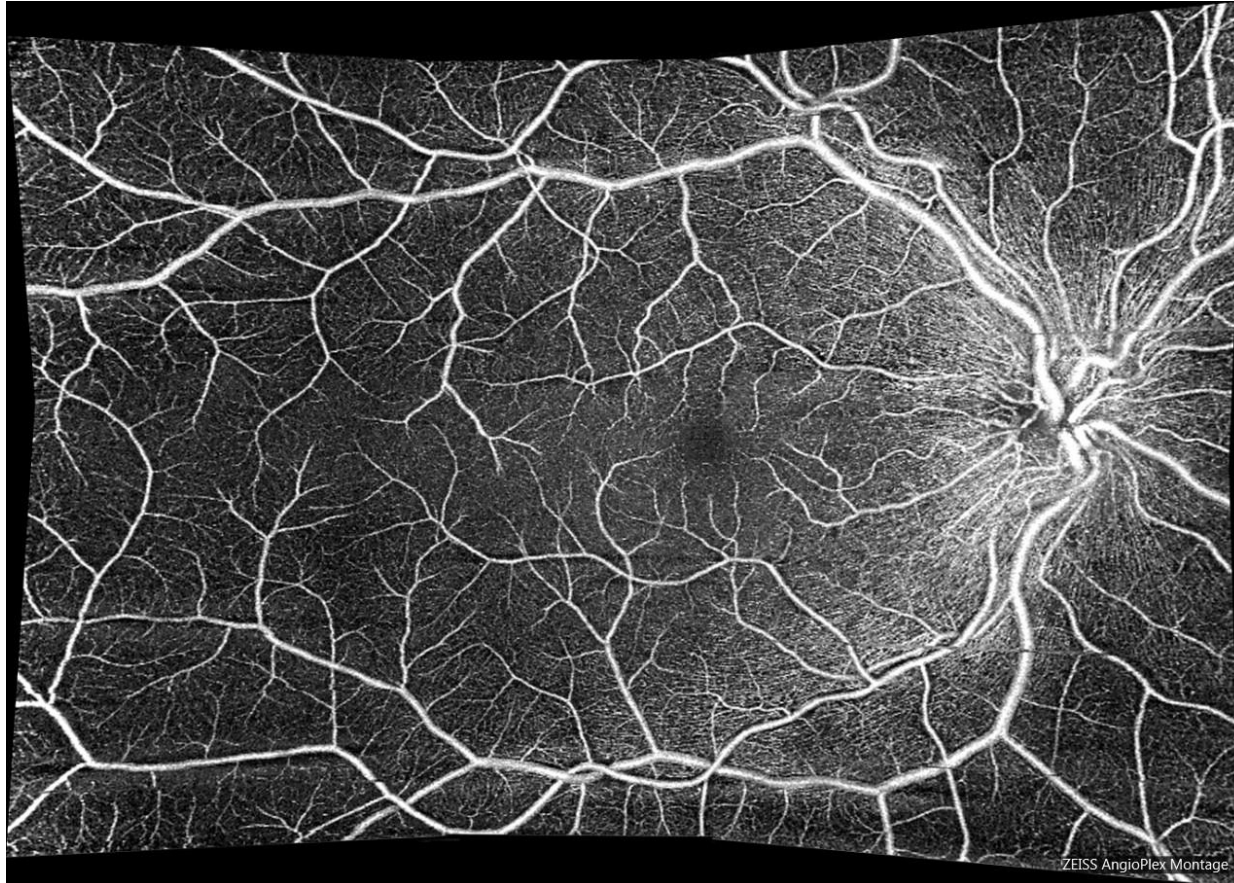
- Montaggio semiautomatico 6 shots
- Cerchio centrale FoV ~ 45°
- Full imaging FoV ~ 267°
- Site to site full imaging ~ 48 mm
- Area full imaging ~ 1500 mm<sup>2</sup>





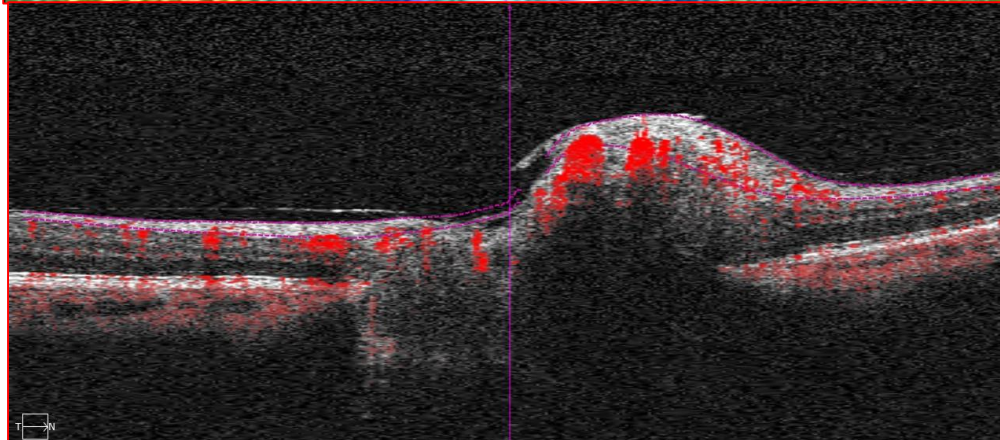
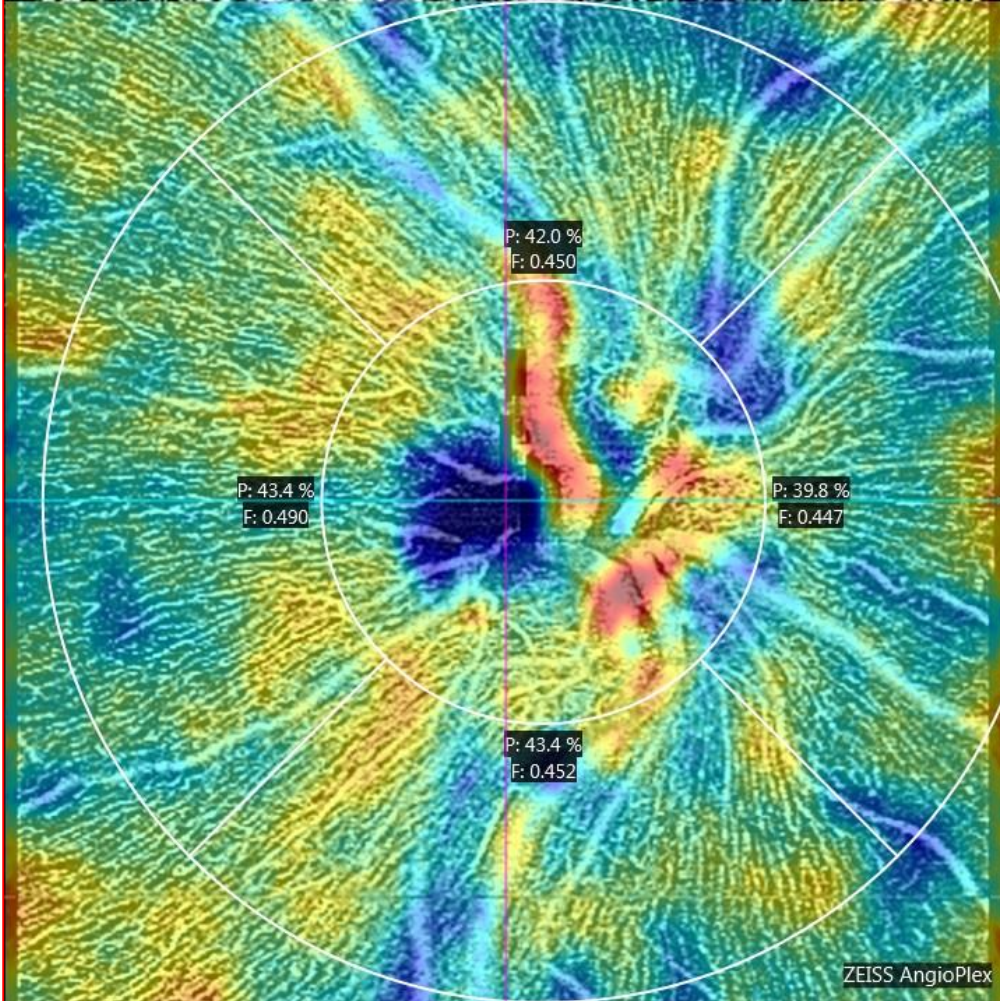
Montage 5 images 8 x 8 mm OCTA ~ 14 mm x 14 mm





Montage 6 images 6 x 6 mm OCTA ~ 10 mm x 14 mm





## ONH Angiography Analysis:

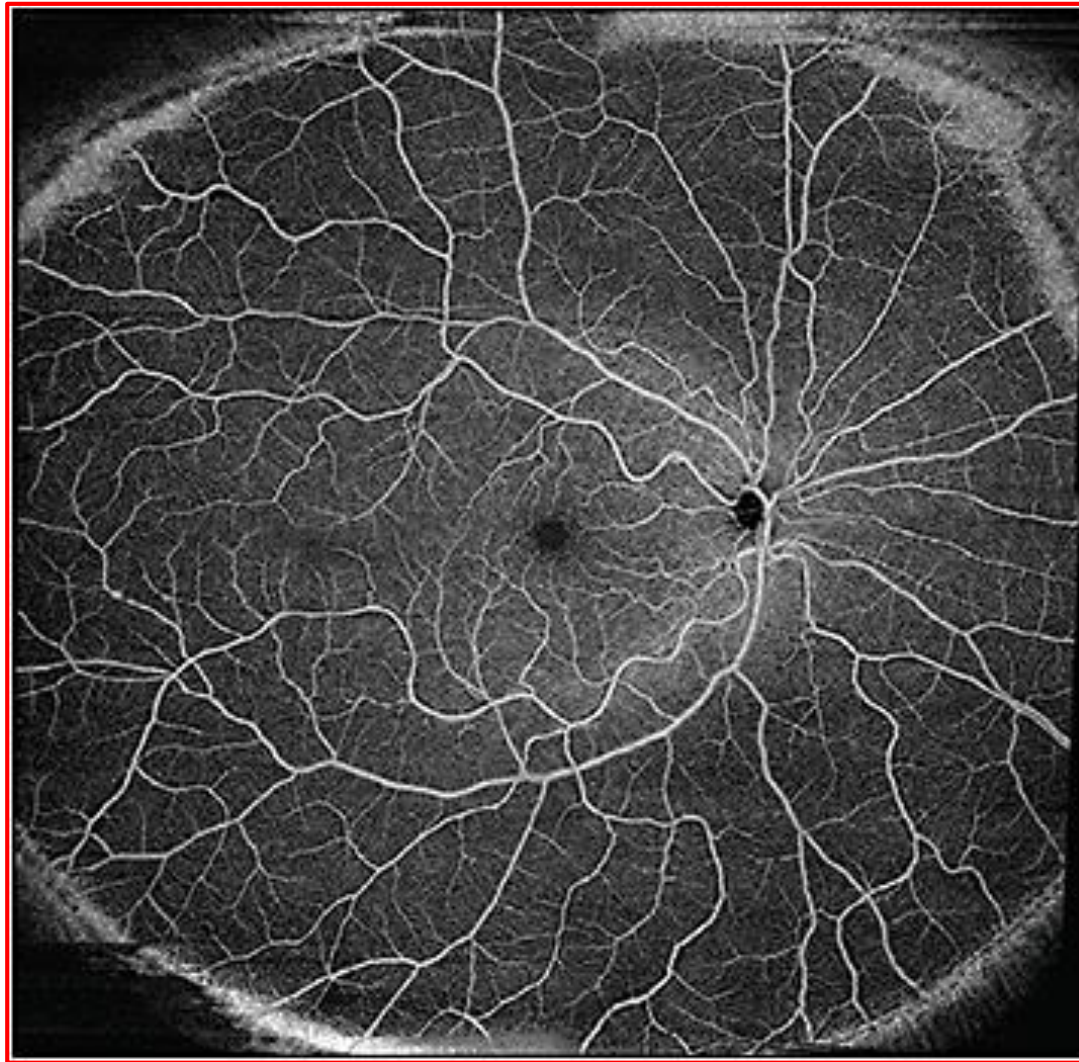
### ONH Angiography

**4.5 mm x 4.5 mm**

**P = Perfusion = Area perfusa/area totale**  
**F = Flux Index = Lunghezza vasi/area totale**

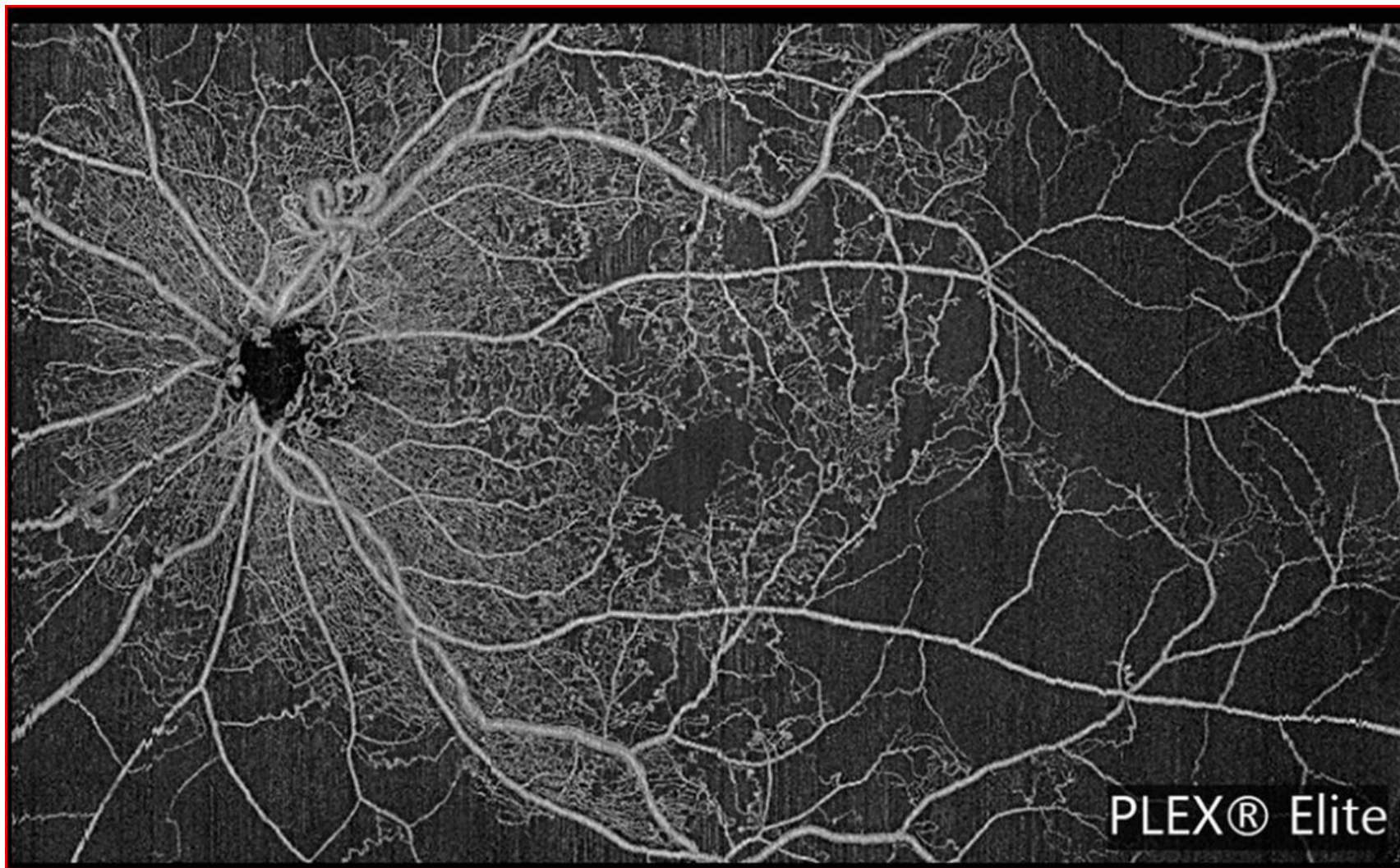
**Reference: Top ILM**  
**Bottom RNFL**





Montage of **12 mm x 12 mm** scans from a normal eye obtained on the swept-source Zeiss Plex Elite 9000. **12 mm x 12 mm** scans were obtained, **one centered at the fovea**, and the **other 4 centered at the 4 quadrants** around the fovea. The montaging of these **5 scans**

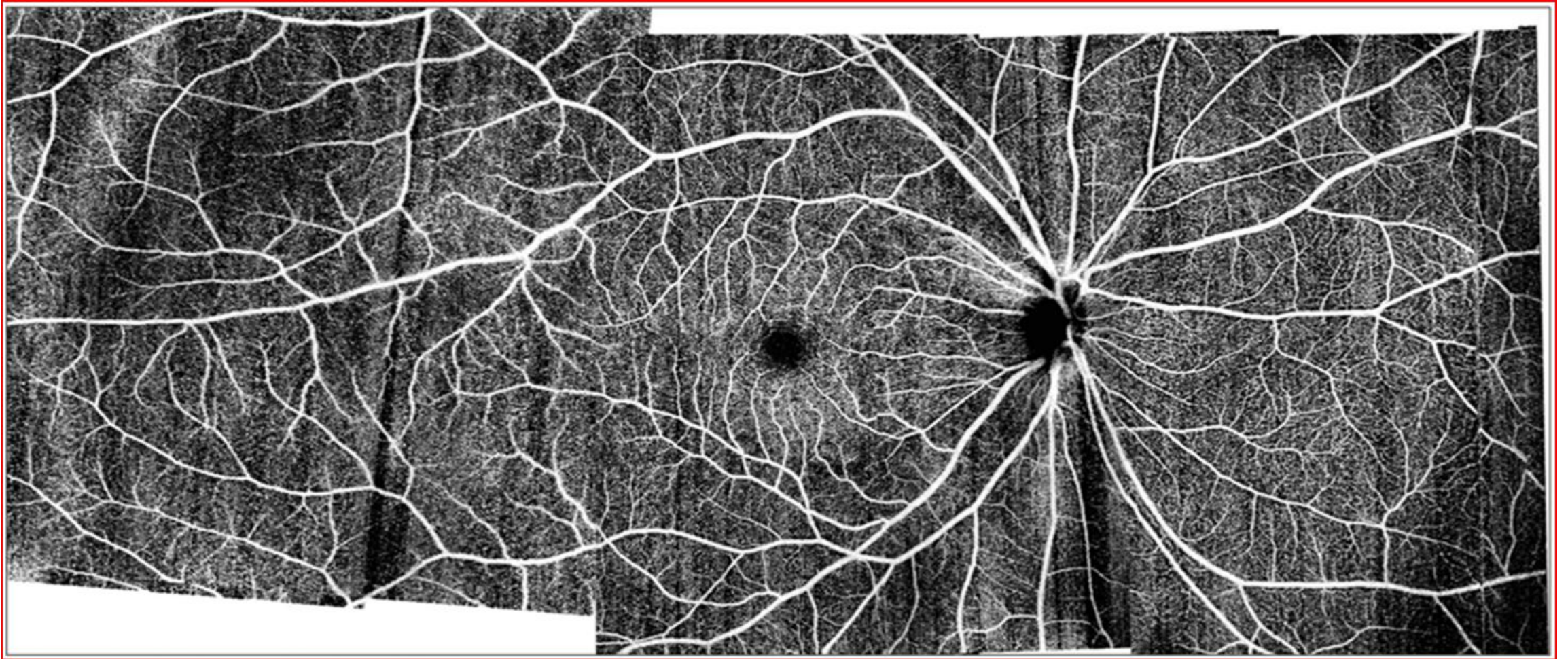




ZEISS receives **the first US FDA Clearance** for **Swept-Source OCT** posterior ocular imaging with PLEX Elite 9000. It is a SS-OCT instrument with a tunable laser centered at 1050 nm, a scan speed of 100,000 A-scans/sec at a tissue **depth of 3.0 mm**, and an axial resolution of **6.3  $\mu$ m, with a 56° field of view (10 mm x 14 mm)**

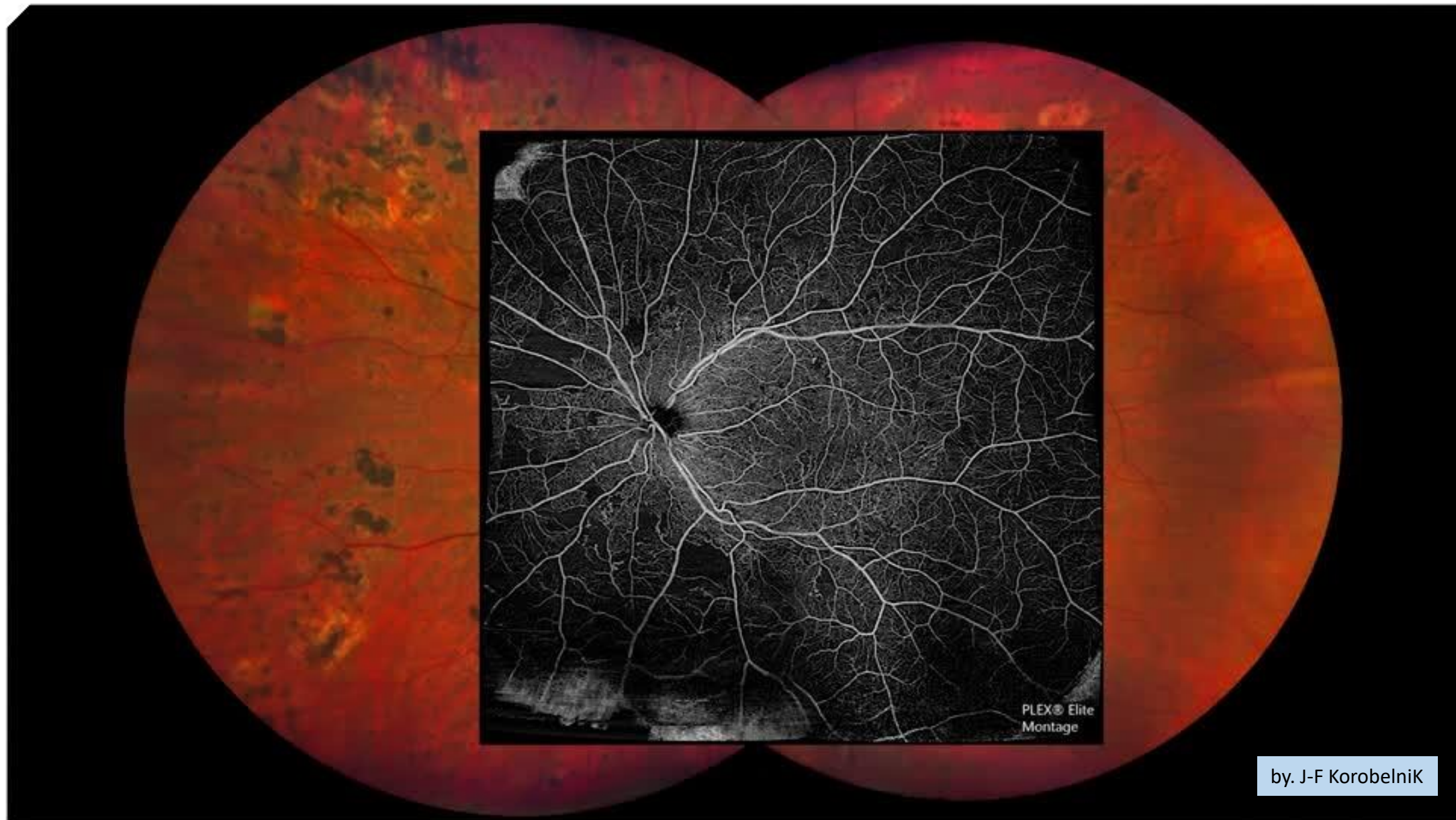
**Advanced Retina Imaging (A R I)** a global consortium (network) of the highest caliber of clinicians and scientists.  
President Philip J Rosenfeld, Bascom Palmer Eye Institute, # 1 in USA, Best in Ophthalmology for the 17<sup>th</sup> Time





Ultra-Widefield OCTA (~20-mm width, 10-mm height, 7-mm depth) 200-kHz Swept-Source OCT System. (by Simon S. Gao et al.)





by. J-F Korobelnik





Thank you for your kind attention!

Arrivederci al XIX° Congresso SOC Corigliano-Rossano